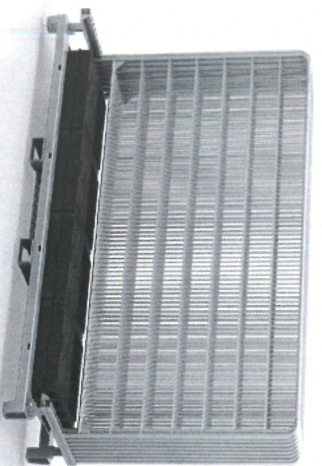


ROUND CORNER
for better durability

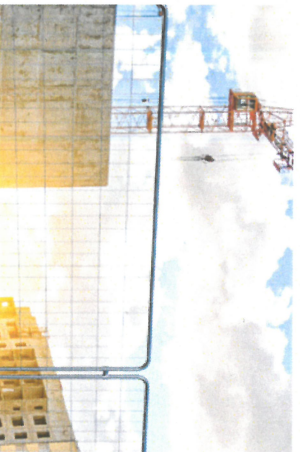
**CORNER
REINFORCEMENT**
for better rigidity



Looking for strong and reliable fencing system? **Mobilt RC CB** is one of the most durable fence panels on the market. Designed to withstand long-standing exploitation in difficult construction site conditions, it will satisfy even the most demanding clients.



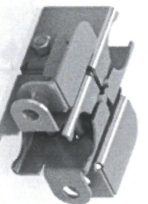
panel type	Mobilt RC CB
size	3430 x 2000 mm
weight	12,62 kg
mesh eye	120 x 250 mm
wire diameter	3 mm
capacity on transport pallet	30 Mobilt RC CB panels and 30 stabilising feet



DEDICATED ACCESSORIES



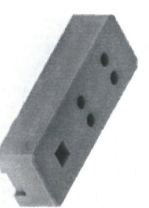
Clamp



Mobilt RC bolt



Gate wheel



PVC foot